



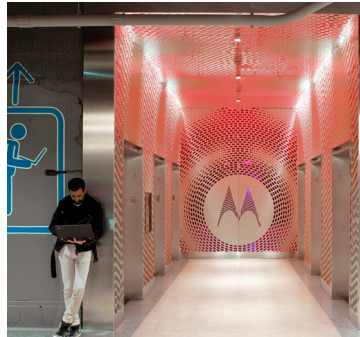
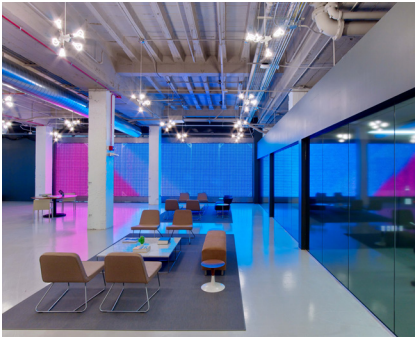
Lighting Design Group

## SELECTED PROJECT EXPERIENCE CORPORATE HEADQUARTERS

CD+M Lighting Design Group is an international lighting design consultancy comprised of designers whose work encompasses a variety of markets. Our award-winning design team has extensive experience creating innovative custom lighting plans to enhance architectural environments. Our clients include leading architects, interior designers and developers in more than 20 countries worldwide.

With staff in the US, UAE, UK and PRC, our designers are fluent in multiple languages, maintain close ties to global manufacturers and suppliers and have an excellent understanding of how to integrate lighting into both architecture and landscaping.

### MOTOROLA MOBILITY HEADQUARTERS, CHICAGO, IL



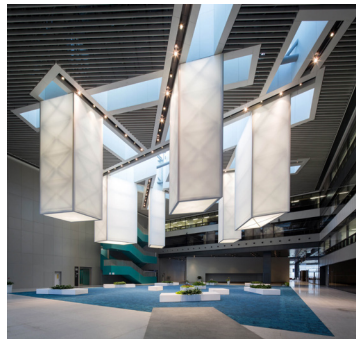
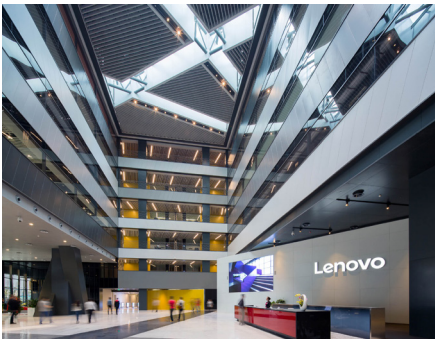
Working closely with Motorola, Gensler and CD+M created a space that integrates interior architecture with the latest thinking in technology, strategic workplace design, lighting controls and sustainable design. The project team achieved a rare LEED Platinum Certification by carrying out practical and measurable strategies. The new 600,000 SF workspace includes open, collaborative office spaces, an outdoor terrace, lab benching and production line equipment and several amenity spaces, including food service, a conference center and customer service center.

### GOODYEAR HEADQUARTERS, AKRON, OHIO

Stationed in the company's hometown of Akron, Ohio, Goodyear's new world headquarters facility is a sprawling 685,000 SF, three-wing compound divided by two expansive six-story atriums. In addition to the newly constructed building, the existing 200,000 SF Innovation Center underwent a massive renovation. CD+M worked closely with both design teams to create environments that realized the architects' vision. Substantial backlit ceilings and walls introduce large luminous surfaces to the public spaces, creating warmth, dimension and texture. Carrying over onto the working floors, planes are illuminated by architectural coves and slots, modeling the architecture.



### LENOVO HEADQUARTERS, BEIJING, PRC



At the core of the lighting design team's plans for Lenovo's new Global Headquarters is the Owner's commitment to receive both LEED Gold and CHINA Green Building 3 Star status. The fundamental concept of the lighting scheme is to deliver natural light into as many interior spaces as possible, and supplement with state-of-the-art artificial lighting only where necessary. An Advanced Intelligent Lighting System is integrated throughout the campus, detecting motion and light levels, enhancing and refining as necessary to meet the task lighting needs for each unique space.

### CONTACT:

**Ted Ferreira**, Principal  
tferreira@cdmlight.com  
1344 La France St. NW, Suite 1  
Atlanta, GA 30307 US  
+ 1 404 522 9911

**Bill Johnson**, Director  
bjohnson@cdmlight.com  
PO Box 476224  
Dubai, UAE  
+ 971 4 441 6603

**Marc Rosenberg**, Principal  
mrosenberg@cdmlight.com  
1800 South Brand Blvd., Suite 302  
Glendale, CA 91204  
+ 1 818 241 2601

**Sunny Kang**, Associate Principal  
skang@cdmlight.com  
3 Bai Jia Zhuang Road, Unit C2-101  
Chaoyang District, Beijing PRC 100020  
+ 86 010 6591 9318